



CHELSEA  
TEXTILES

INTRODUCING

# ARCADIA



---

Chelsea Textiles is proud to introduce its newest design, Arcadia. Available as a vine or a sprig with matching border.

---

Taken from an 18th Century English original, Arcadia is an exquisite example of embroidery from this era depicting flora and folia in remarkable detail.









## Arcadia in Autumn

Double and single roses, daffodils, honeysuckle and carnations all feature along side fiery lilies, a European native associated with the orange orders of Holland. The tulips in the design bear the flamboyant stripes so fashionable in the late 17th Century.

Arcadia in Autumn features rich rusts with the harmonious cooler tones of blues and seafoams.

*Panel service available*

*Arcadia in Autumn*  
F683/R

55% Linen, 45% Cotton  
Embroidery Width- 143cm  
Pattern Repeat- 117cm









## Arcadia in Spring

Double and single roses, daffodils, honeysuckle, and carnations all feature along side fiery lilies, a European native associated with the orange orders of Holland. The tulips in the design bear the flamboyant stripes so fashionable in the late 17th Century.

Features the fresh glorious colour palette of an English garden in bloom.

*Panel service available*

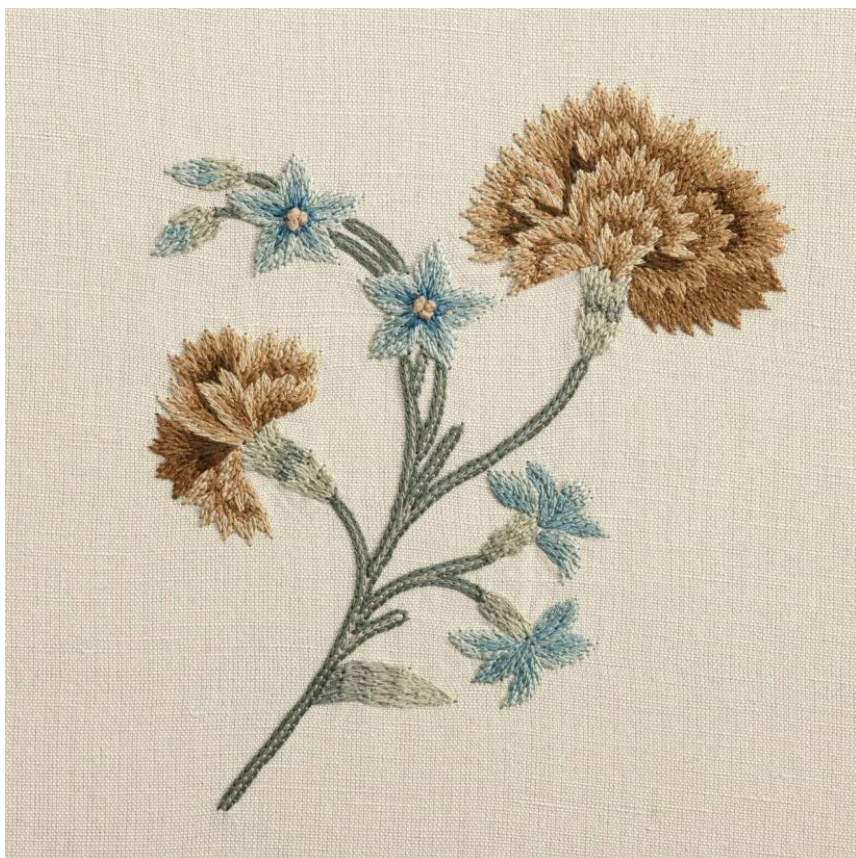


## *Arcadia in Autumn* F683

100% Linen  
Embroidery Width- 143cm  
Pattern Repeat- 117cm







## Arcadia Sprig in Autumn

Double and single roses, daffodils, honeysuckle and carnations all feature along side fiery lilies, a European native associated with the orange orders of Holland. The tulips in the design bear the flamboyant stripes so fashionable in the late 17th Century.

Arcadia in Autumn features rich rusts with the harmonious cooler tones of blues and seafoams.

*Panel service available*

*Arcadia in Autumn*  
F683SP/R

55% Linen, 45% Cotton  
Embroidery Width- 120cm  
Pattern Repeat- 96cm







## Arcadia Sprig in Spring

Double and single roses, daffodils, honeysuckle, and carnations all feature along side fiery lilies, a European native associated with the orange orders of Holland. The tulips in the design bear the flamboyant stripes so fashionable in the late 17th Century.

Features the fresh glorious colour palette of an English garden in bloom.

*Panel service available*

*Arcadia Sprigs in Spring*  
F683SP

100% Linen  
Embroidery Width- 120cm  
Pattern Repeat- 96cm





CHELSEA  
TEXTILES

---

**LANTERO & LANTERO**

**Castelló 35 | 91 564 42 61 | [castello@lanteroylantero.com](mailto:castello@lanteroylantero.com)**

**Maldonado 39 | 91 411 42 78 | [maldonado@lanteroylantero.com](mailto:maldonado@lanteroylantero.com)**

**Sagasta 7 | 91 057 93 70 | [sagasta@lanteroylantero.com](mailto:sagasta@lanteroylantero.com)**

---