

Kieffer



Untitled

Kieffer

Kieffer is a textiles atelier that advocates respect, love and the exploration of textile-making.

Kieffer develops from the Rubelli's expertise and contributes to the expansion of its offering and textile production research.

Kieffer deeply regards the knowledge that resides in the past, while equally embracing the potentiality of the present.

Kieffer joyfully navigates weft and warp with the confidence that detail makes the difference.

Kieffer sees textile as the preferred interface for the tactile exploration of the domestic environment: fabrics serve life to veil and highlight, to shelter and comfort, and ultimately to always celebrate the senses.

Kieffer weaves together the archetypical and the simple with the bold and the adventurous, as long as it serves and honours daily life.

Kieffer knows when to be quiet and when to be exuberant, when it is time to whisper while also recognising the innate intensity of raw materials.

Kieffer cares.
Cares for quality, cares for durability, cares for nuances, cares for the integrity of production processes.

Kieffer produces in the proximity of Lake Como, at the Rubelli factory, but chooses to expand globally when it makes sense to include other expertise.

Kieffer è un atelier che promuove il rispetto, l'amore e la sperimentazione dei tessuti.

Kieffer si evolve dalla competenza del Gruppo Rubelli ampliandone l'offerta e contribuendo alla ricerca tessile.

Kieffer rispetta l'eredità del passato e in egual misura abbraccia le potenzialità del presente.

Kieffer esplora trama e ordito, con la convinzione che siano i dettagli a fare la differenza.

Kieffer vede il tessuto come l'interfaccia privilegiata per l'esplorazione tattile degli ambienti domestici: i tessuti sono al servizio della quotidianità celando o mettendo in evidenza, proteggendo e accarezzando, sempre e comunque celebrando i sensi.

Kieffer tesse il semplice e l'archetipico con l'audace e l'avventuroso, a condizione di essere sempre al servizio della vita quotidiana.

Kieffer sa quando essere pacato o esuberante, e quando è tempo di sussurrare, ma è anche in grado di riconoscere la forza innata dei materiali grezzi.

Kieffer sa aver cura.
Cura della qualità, cura della durabilità, cura delle nuances, cura dei processi produttivi.

Kieffer viene prodotto nella manifattura Rubelli e in altre tessiture nei pressi del Lago di Como, ma sa aprirsi al mondo quando necessario.

Kieffer

Edited by / A cura di
Formafantasma

For the collection of textiles, Kieffer chooses not to name it - or better to leave it "untitled". Pablo Picasso often claimed he had nothing to do with his works' titles. Many of the artist's paintings were named by dealers while he preferred the work to speak for itself. "What good does it do, after all, to impart explanations?" he once said. "A painter has only one language." And for Picasso and many other artists, that language is visual. Kieffer speaks the language of textiles and that should be sensed, not read, or contemplated. 'Untitled' looks both at what is needed and what is desired, departing from the timeless beauty and functionality of natural fibres: wool, linen, hemp, jute, cotton and paper. Tactility is central and explored from the subtle to the excessive. The innate seductiveness of un-dyed fabrics and natural pigments is highlighted by pairing these with touches of synthesised lime, lilac and pink colours. Untitled is a celebration of simplicity and care for the wonderful imperfections of the loom, for the subtlety of tonal compositions of colours and the pleasure of touch. Untitled is uncomplicated, sensitive and a celebration of natural fibres.

No title is needed.
The textiles are talking.

Kieffer sceglie di non dare un titolo alla collezione, o meglio di lasciarla "untitled". Pablo Picasso dichiarava spesso di non aver nulla a che vedere con i titoli delle sue opere: erano i commercianti d'arte ad attribuirli, mentre lui preferiva che fosse l'opera stessa a parlare. "A che serve, dopotutto, impartire spiegazioni?" disse una volta "Un pittore ha un solo linguaggio." E per Picasso, come per molti altri artisti, quel linguaggio è visivo. Kieffer parla la lingua dei tessuti, fatta per essere percepita dai sensi, e non per essere letta o contemplata. 'Untitled' guarda a ciò che serve e a ciò che si desidera, partendo dalla bellezza senza tempo e dalla funzionalità delle fibre naturali: lana, lino, canapa, cotone, carta. La tattilità è centrale e viene esplorata nelle sue declinazioni, dalla più delicata alla più marcata. Il fascino innato dei tessuti non tinti e dei pigmenti naturali viene esaltato dall'accostamento con tocchi di colori sintetici come il lime, il lilla e il rosa. 'Untitled' è un inno alla semplicità, alla cura, alle meravigliose imperfezioni del telaio, alle raffinate composizioni tonali e al piacere del tatto. 'Untitled' è senza fronzoli e sensibile, è una celebrazione delle fibre naturali.

Non serve nessun titolo.
Parlano i tessuti.

Untitled

17308-9
17285-1

Armchair-Feral
Bedspread-Linéaire





17308-9

Feral

17308-7
17305-2

Cushion-Feral
Armchair-Feral Stripe



Nachi

17300-17





17300-17

Nachi

17311-4
17303-1
17278-7
17307-1

Upholstery-Tekko
Cushion-Iguazu
Cushion-Tricotage
Cushion-Kemps



17278-7
17307-1
17311-4

Cushion-Tricotage
Cushion-Kemps
Upholstery-Tekko



17311-4
17307-1
17303-1
17278-7

Upholstery-Tekko
Cushion-Kemps
Cushion-Iguazu
Cushion-Tricotage





Chair-Dune
Bench-Ferric

17312-5
17301-8



Chair - Dune
Bench - Ferric

17312-5
17301-8





17278-3
17308-7
17224-13

Sofa-Tricotage
Cushion-Feral
Cushion-Tweed Couleurs

17312-3

Dune





17304-1

Oltre





Oishi

17322-1

17322-1

Oishi



17300-17
17308-7
17224-13
17301-8

Cushion-Nachi
Cushion-Feral
Cushion-Tweed Couleurs
Bench-Ferric





17301-5
17301-8
17317-1

Chair-Ferric
Chair-Ferric
Sheer-Breeze



17317-1

Breeze



Ferric

17301-10





17300-9
17300-10
17303-1

Cushion-Nachi
Cushion-Nachi
Cushion-Iguazu

17239-6

Reloaded



17308-10

Feral





Sofa-Ryder
Cushion-Oltre
Curtain-Rideaux D'Abeille
Cushion-Feral

17310-1
17304-2
17287-2
17308-7

17313-2

Leveche shown railroaded





Cria

17306-1

The Collection

Grande Largeur

17162

Composition:
93% Cotton, 7% Linen

Width: 280cm - 110"
Weight: 2090gr/mtl

Martindale:
30.000

Heavy use
Colours: 4



Velours Soleil

17189

Composition:
61% Cotton, 39% Viscose

Width: 130cm - 51"
Weight: 820gr/mtl

Martindale:
60.000

Heavy use
Colours: 10



17162-3



17189-12

Tweed Couleurs

17224

Composition: 50% Cotton,
25% Acrylic, 25% Polyester

Width: 140cm - 55"
Weight: 1000gr/mtl

Martindale:
40.000

Heavy use
Colours: 7



17224-13

Tweed Décoloré

17270

Composition: 50% Cotton,
25% Acrylic, 25% Polyester

Width: 140cm - 55"
Weight: 1000gr/mtl

Martindale:
40.000

Heavy use
Colours: 9



17270-22

Reloaded

17239

Composition: 48% Cotton,
33% Linen, 19% Viscose

Width: 140cm - 55"
Weight: 640gr/mtl

Martindale:
20.000

Heavy use
Colours: 4



17239-6

Mondo

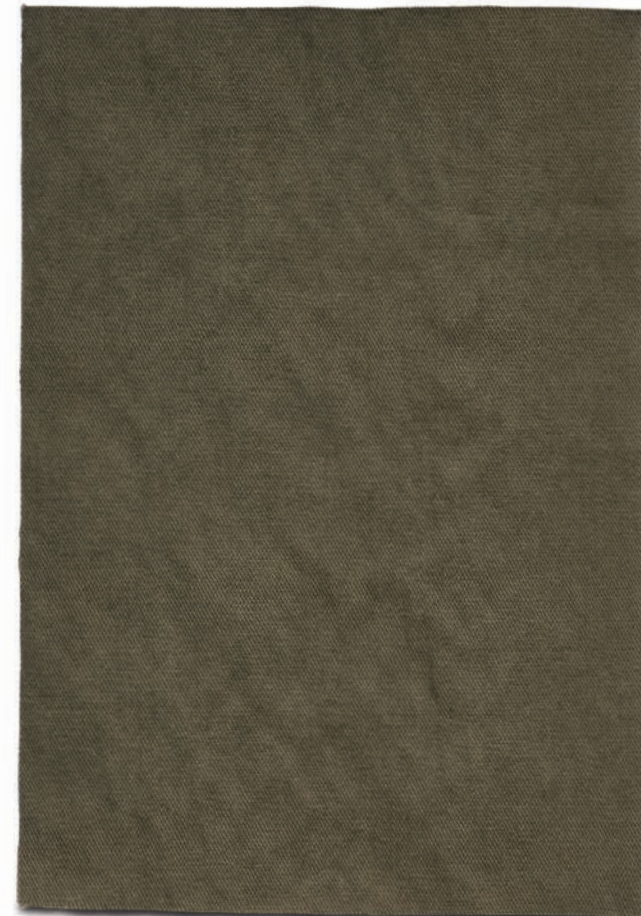
17257

Composition:
84% Cotton, 16% Polyamid

Width: 150cm - 59"
Weight: 390gr/mtl

Martindale:
30.000

Heavy use
Colours: 5



17257-6

Aloha

17268

Composition:
70% Cotton, 30% Polyamid

Width: 135cm - 53"
Weight: 690gr/mtl

Martindale:
40.000

Heavy use
Colours: 4



17268-8

Lin Froissé

17275

Composition:
66% Linen, 34% Cotton

Width: 145cm - 57"
Weight: 530gr/mtl

Heavy use
Colours: 5



17275-2

Laine et Chanvre

17277

Composition: 45% Cotton,
39% Wool, 16% Hemp

Width: 130cm - 51"
Weight: 390gr/mtl

Light use
Colours: 3



17277-2

Tricotage

17278

Composition: 29% Acrylic,
24% Polyester, 21% Cotton,
19% Linen, 7% Viscose

Width: 140cm - 55"
Weight: 790gr/mtl

Martindale:
70.000

Heavy use
Colours: 5



17278-16

Nuance Du Sable

17283

Composition: 32% Acrylic,
28% Wool, 25% Polyester,
8% Viscose, 7% Linen

Width: 145cm - 57"
Weight: 740gr/mtl

Martindale:
25.000

Heavy use
Colours: 4



17283-4

Linéaire

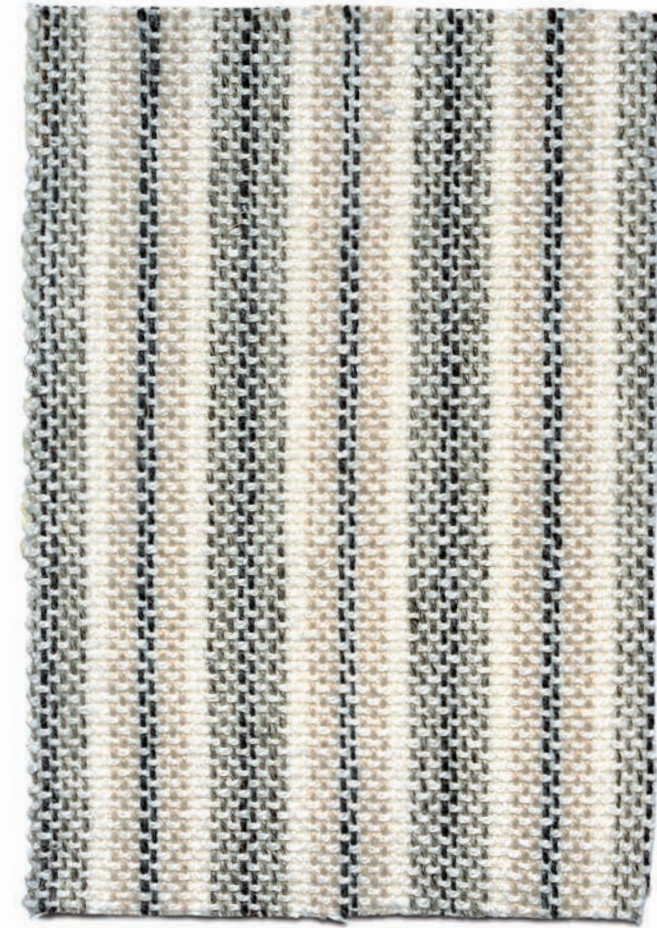
17285

Composition:
50% Linen, 50% Cotton

Width: 135cm - 53"
Weight: 630gr/mtl

Martindale:
25.000

Heavy use
Colours: 2



17285-1

Ferric

17301

Composition:
100% Hemp

Width: 130cm - 51"
Weight: 470gr/mtl

Normal use
Colours: 10



17301-8

Ferric - 17301-9 >



Nachi

17300

Composition:
100% Linen

Width: 300cm - 118"
Weight: 1500gr/mtl

Martindale:
32.000

Heavy use
Colours: 20



17300-20

Karst

17302

Composition:
52% Hemp, 48% Linen

Width: 140cm - 55"
Weight: 540gr/mtl

Martindale:
22.000

Heavy use
Colours: 3



17302-3

Iguazu

17303

Composition:
100% Linen

Width: 135cm - 53"
Weight: 1040gr/mtl

Martindale:
120.000

Heavy use
Colours: 2



Feral Stripe

17305

Composition: 14% Mohair,
14% Wool, 28% Cotton,
36% Acrylic, 8% Polyamid

Width: 155cm - 61"
Weight: 1000gr/mtl

Martindale:
32.000

Heavy use
Colours: 2



Cria

17306

Composition:
100% Alpaca Pile

Width: 130cm - 51"
Weight: 790gr/mtl

Martindale:
120.000

Heavy use
Colours: 3



17306-1

Kemps

17307

Composition:
100% Fleece Wool

Width: 145cm - 57"
Weight: 740gr/mtl

Normal use
Colours: 2



17307-2



Feral

17308

Composition: 14% Mohair,
14% Wool, 28% Cotton,
36% Acrylic, 8% Polyamid

Width: 155cm - 61"
Weight: 1000gr/mtl

Martindale:
32.000

Heavy use
Colours: 11



17308-10

Masavi

17309

Composition:
77% Woo, 23% Cotton

Width: 140cm - 55"
Weight: 910gr/mtl

Martindale:
28.000

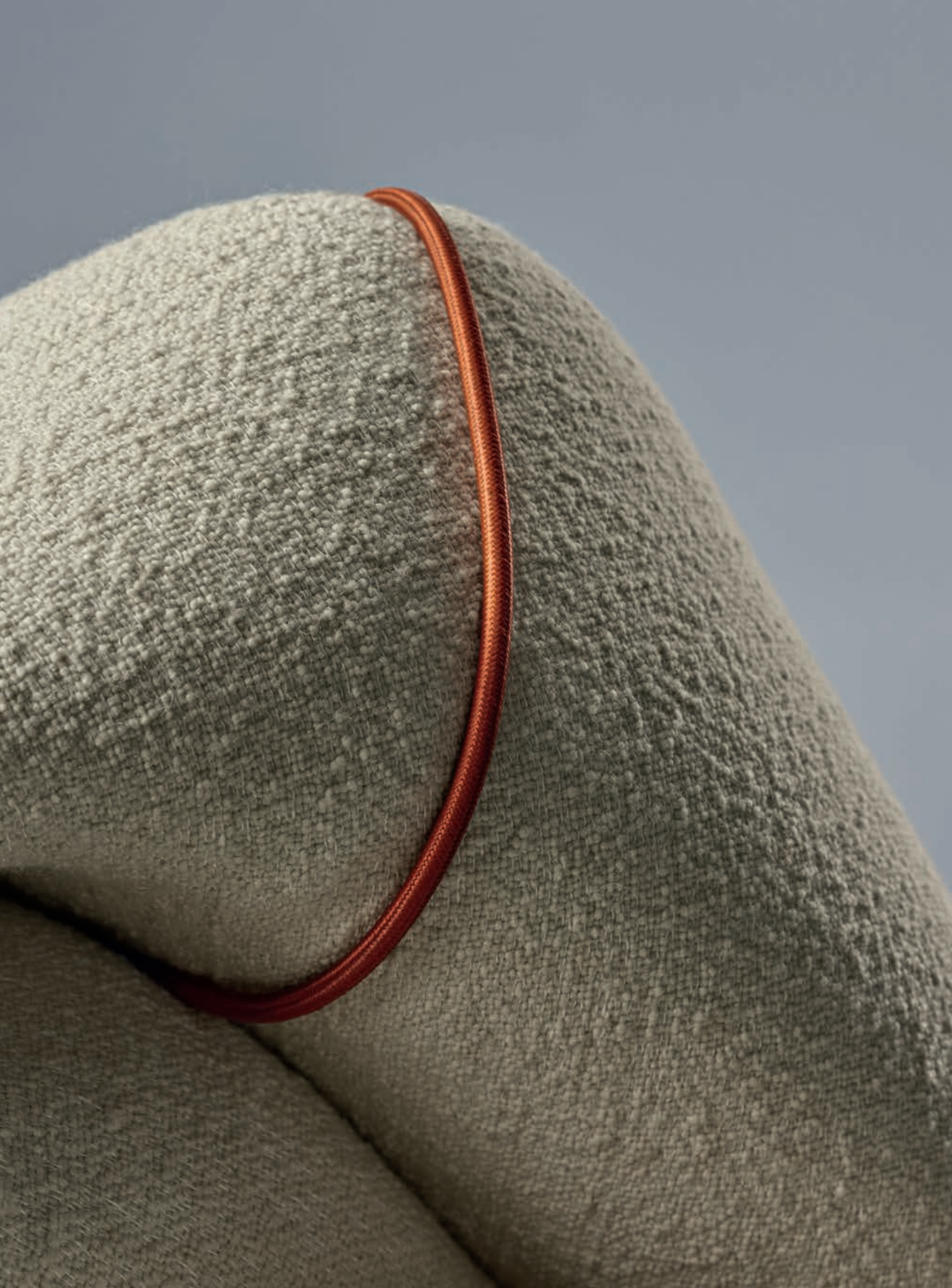
Heavy use
Colours: 3



17309-1

Masavi - 17309-3 >





Ryder

17310

Composition: 75% Wool,
17% Cotton, 8% Linen

Width: 140cm - 55"
Weight: 1000gr/mtl

Martindale:
42.000

Heavy use
Colours: 2



17310-1

Tekko

Composition:
57% Regenerated Cotton,
21% Cotton, 14% Jute,
8% Polyester

Width: 145cm - 57"
Weight: 940gr/mtl

Normal use
Colours: 4

17311



17311-3

Dune

Composition: 59% Jute,
18% Acrylic, 18% Wool,
5% Polyester

Width: 140cm - 55"
Weight: 1200gr/mtl

Martindale:
28.000

Heavy use
Colours: 6

17312



17312-3

Lin Uni

17184

Composition:
100% Linen

Width: 315cm - 124"
Weight: 560gr/mtl

Draperly
Colours: 5



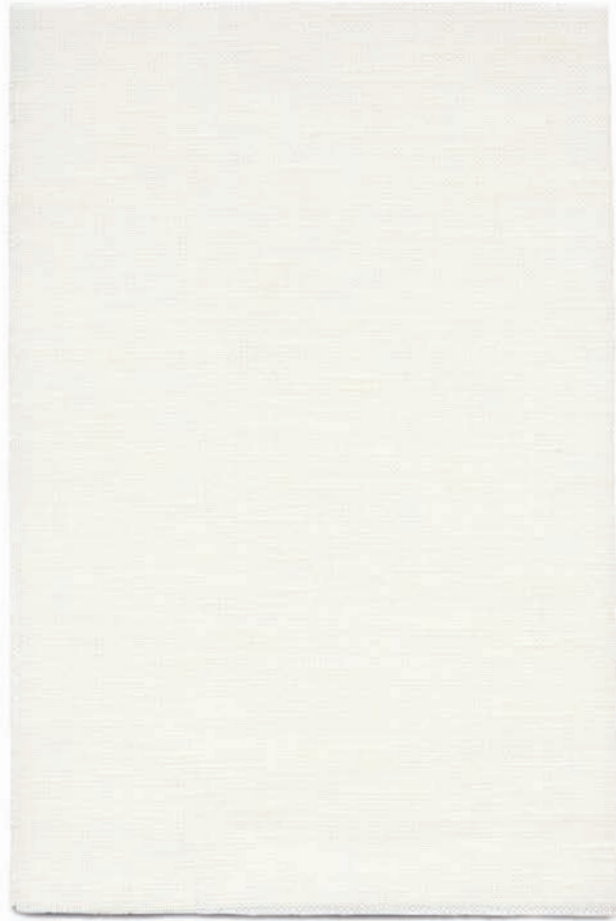
Tendre

17201

Composition:
100% Linen

Width: 310cm - 122"
Weight: 780gr/mtl

Draperly
Colours: 4



17184-7



17201-9

Voilà

17262

Composition:
100% Linen

Width: 300cm - 118"
Weight: 480gr/mtl

Drapery
Colours: 5



Essentiel

17281

Composition: 54% Linen,
32% Wool, 14% Polyamid

Width: 320cm - 126"
Weight: 370gr/mtl

Drapery
Colours: 4



17262-1



17281-1

Tissu d'Elegance

17282

Composition:
62% Polyester, 38% Linen

Width: 295cm - 116"
Weight: 770gr/mtl

Draperly
Colours: 4



Rideaux D'Abeille

17287

Composition:
100% Linen

Width: 260cm - 102.5"
Weight: 680gr/mtl

Draperly
Colours: 3





Oltre

17304

Composition:
90% Linen, 10% Polyamid

Width: 145cm - 57"
Weight: 560gr/mtl

Drapery
Colours: 2



17304-1

Leveche

Composition:
100% Linen

Width: 310cm - 122"
Weight: 620gr/mtl

Draperly
Colours: 3

17313



17313-2 shown railroaded

Gusmao

Composition: 40% Linen,
30% Hemp, 30% Cotton

Width: 310cm - 122"
Weight: 680gr/mtl

Draperly
Colours: 3

17314



17314-3

Glider

17315

Composition:
75% Hemp, 25% Linen

Width: 315cm - 124"
Weight: 650gr/mtl

Draperly
Colours: 1



Breeze

17317

Composition: 56% Linen,
27% Bamboo, 17% Hemp

Width: 315cm - 124"
Weight: 500gr/mtl

Draperly
Colours: 1



17315-1



17317-1

Piterağ

Composition: 45% Linen,
45% Cotton, 10% Silk

Width: 310cm - 122"
Weight: 340gr/mtl

Draperly
Colours: 2

17318



17318-2

Aloft

Composition: 50% Linen,
45% Wool, 5% Polyamid

Width: 315cm - 124"
Weight: 500gr/mtl

Draperly
Colours: 1

17319



17319-1



Solano

17320

Composition:
100% Linen

Width: 320cm - 126"
Weight: 280gr/mtl

Draperly
Colours: 8



17320-5

Etesian

17321

Composition:
100% Linen

Width: 320cm - 126"
Weight: 300gr/mtl

Draperly
Colours: 5



17321-3

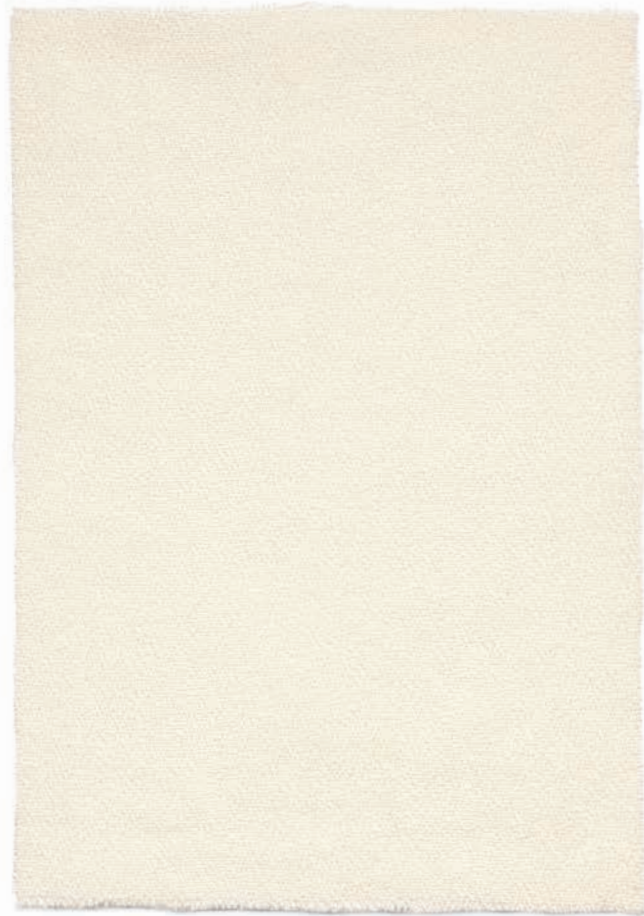
Oishi

17322

Composition:
56% Linen, 44% Paper

Width: 315cm - 124"
Weight: 370gr/mtl

Draperly
Colours: 1



17322-1

[Oishi- 17322/1 >](#)



Any reproduction, representation
or modification in full or part is
expressly prohibited ©Rubelli
Marketing 2023 - All rights reserved

Thanks to:
Tacchini, Davide Groppi,
La Cividina, Flos,
Galleria Giustini/Stagetti,
Cassina, Altai

Art Direction:
Formafantasma

Concept and Graphic Design:
Studio Blanco

Creative coordination
and production:
P:S

Interior Photographer:
Robert Rieger

Studio Photographer:
Claudia Zalla

Styling:
Studio Salaris

Text:
Formafantasma

Printing:
Grafiche Antiga 2023

Publisher:
Rubelli spa

www.kieffertextiles.com
Digital version of this catalogue
<https://r.rubelli.com/kieffer23>





RUBELLI.COM